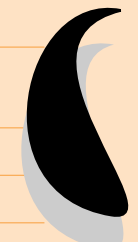
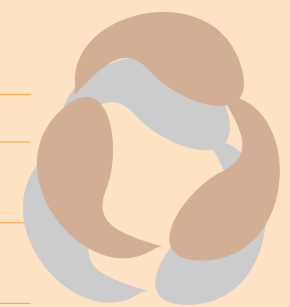


# REQUIREMENTS

## USED OIL MANAGEMENT STANDARDS

	<b>GENERATOR*</b> Subparts C and D	<b>TRANSPORTER/ TRANSFER FACILITY</b> Subpart E	<b>PROCESSOR/ RE-REFINER</b> Subpart F	<b>OFF-SPECIFICATION BURNER</b> Subpart G	<b>MARKETER**</b> Subpart H
Storage in Containers and Aboveground Tanks	Good Condition	Good Condition	Good Condition	Good Condition	N/A
Labels for Tanks and Containers	Yes	Yes	Yes	Yes	N/A
Secondary Containment System (Oil Impervious Berm, Dike, or Retaining Wall and Floor)	No	Yes, for transfer facilities N/A, for transporters	Yes	Yes	N/A
Environmental Release Cleanup	Yes	Yes	Yes	Yes	N/A
EPA Identification Number and Notification	No	Yes	Yes	Yes	Yes
Tracking	No	Yes, acceptance and delivery records	Yes, acceptance and delivery records	Yes, acceptance records	Yes, on-specification or off-specification delivery records
Analysis	No	Yes, information or testing that shows that the total halogen content is above or below 1000 ppm	Yes, create and follow an analysis plan that includes determining total halogen content and, if appropriate,	Yes, information or testing that shows that the total halogen content is above or below 1000 ppm	Yes, information or testing needed to determine used oil specification
Recordkeeping (for three years)	No	Yes, copies of information or testing data of total halogen content or for rebutting the presumption of hazardous waste mixing; acceptance and delivery records	Yes, copies of information or testing data of total halogen content or for rebutting the presumption of hazardous waste mixing; acceptance and delivery records	Yes, copies of information or testing data of total halogen content or for rebutting the presumption of hazardous waste mixing; acceptance records	Yes, information or test data used to determine specification type; delivery records; if off-specification, burner certification
Preparedness and Contingency Plans	No	No	Yes, same as Part 264/265, Subpart D	No	N/A
Biennial Reporting	No	No	Yes	No	N/A
Closure	No	No	Yes	No	N/A
Dust Suppressant Ban	Yes	Yes	Yes	Yes	N/A
Surface Impoundment Ban	Yes	Yes	Yes	Yes	N/A



\* Generator requirements apply to aggregation points and collection centers.

\*\* Marketers also come under regulation as a generator, transporter, and/or processor or re-refiner. No used oil handler can be solely a marketer.